

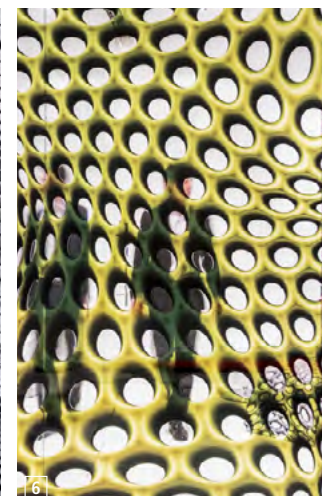
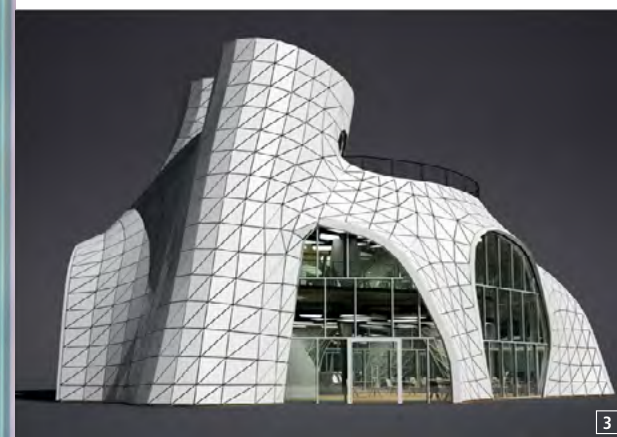
BRICKELL

INSIDE OUT

*Find HOME INSPIRATION
around every corner*

Interior Influx

Miami's TOP DESIGN MINDS
help create the HOME of your DREAMS



MAC STOPA

Poltrona Frau Group Miami
59 NW 36th St., Miami
305.576.3636
PoltronaFrauGroup.net
MassiveDesign.pl

In an age of increasing specialization, Mac Stopa is one of the last true polymaths. His greatest asset? He bears an intellect unimpaired by the traditional role of the interior designer, a natural result of his roots. "My mother was a set designer working for Polish TV and in theaters," he says. "Most of my close relatives were architects." A graduate of the School of Architecture of Krakow, Stopa brings a refreshingly erudite viewpoint to the design field, finding daily inspiration in "mathematics, geometry, technology and the beauty of the modern world." Such an eclectic range of inspirations feeds his wide scope of interests. The thing he enjoys most about his occupation? "Working in several design fields," he says. "I enjoy working simultaneously in architecture, interior design, product design,

graphic design and fashion." Interested in seeing, or even owning, some of Stopa's theorem in action? Visit the above listed Poltrona Frau Group Miami to see his mind-bending Drum Chair, commissioned by Italian luxury furniture designers Cappellini.

Design Philosophy: "Functional design often based on modularity and the latest production technology. Aesthetics is important, but comfort and function should not be compromised. I'm passionate about organic sculptural geometries often inspired by the randomness of the natural environment."

Essential Must-Haves: "For outdoors, my soft-touch collection River Stone Poufs and Riverside Armchair for Tonon/Sandler Seating. For indoor, the Drum Collection for



Cappellini and the Hybrid Collection Glass Doors & Panels for Casali."

Trend Prediction: "The age of 3D printing mass production is coming. It will be the next big thing revolutionizing each aspect of our lives. In the design field and in architecture, the influence will be enormous. Freedom of expression combined with new 3D printing technologies will allow for new design aesthetics and super smart product performances and functionalities."



1. Art Walk open-air gallery, 200-ft. long organic structure composed from 20 modular exhibition windows.

2. Warsaw Spire Lobby: View on the front entrance, it was the first project with the Drum Collection. All elements of the interior, including modular ceilings, floor finishes, organic wall cladding system, black granite front desk and furniture were designed by Mac Stopa.

3. Gazebo, light metal structure building. Floorplan of the building looks like a fish; will be high-end frutti di mare/steak restaurant located in Warsaw Downtown, now under construction. Opening is scheduled for Spring 2017.

4. Stopa with white electric guitar prototype designed by him in collaboration with Samsung Chemical Europe. Guitar is made in Samsung's solid surface material Staron.

5. Stopa's wife, Dana, sitting on Drum, wearing prototype fashion tunic and pants with 3D Cube pattern in green. Drum Chairs are upholstered in 3D Cube pattern in grey. In press office of *Interni Magazine* designed by Mac Stopa. *Fuori Salone 2016 Milan*.

6. Hybrid Collection Glass for Casali; Dana wears prototype fashion with Mac's 3D Hybrid Collection graphic.

Photos 1-2; 5-6 by Saverio Lombardi Vallauri; Photos 3-4 courtesy of Massive Design



1



3



4



5



6