

NeoCon®

INTERIOR DESIGN®

show 2 daily

the mart — tuesday, june 13, 2017

the a-list

when: All day
who: Formica Corporation
what: Enter to win prizes throughout the day
where: space 7-1010

when: All day
who: Janus et Cie
what: Enter to win outdoor furnishings
where: space 310A

when: 9:00–11:00AM
who: D.L. Couch
what: Espresso bar
where: space 11-113

when: 9:00AM–5:00PM
who: VS America
what: VSpresso lounge
where: space 1171

when: 10:00AM–4:00PM
who: Bentley
what: NeoCon Bentley bar
where: space 1098

when: 10:30AM–12:30PM
who: Tarkett
what: Bloody Mary bar
where: space 380

when: 11:30AM
who: Andrea World
what: Meet Patricia Urquiola
where: space 10-132

when: 2:30–4:30PM
who: Mannington Commercial
what: Cocktail party
where: space 1039

when: 4:00–7:00PM
who: Dauphin
what: Cocktails
where: space 393

BLOCK PARTY @NeoCon

Don't forget to snag your tickets—\$35 online, \$40 at the door—for tonight's Block Party @ NeoCon, hosted by Interior Design and the Mart! The party starts at 5:00 PM on the Mart's South Drive. Special shout-out to event sponsors Andrea World and Rubbermaid. For advance tickets, visit blockparty17.splashthat.com.



sofa, so good

Stefan Scholten and Carole Baijing, the Dutch duo behind Scholten & Baijings, launches the **ColourForm** sofa group for **Herman Miller**—the studio's first collaboration with the maker. The perfectly proportioned seats, designed for working or lounging, are available in various iterations: two- and three-seat sofas (with or without arms), a club chair, an ottoman, a bench, a sectional, and a tête-à-tête. "When designing, we always create options because a product is produced and reproduced many times," Scholten says. "We wanted to give a unique feeling to each one." One of a kind, indeed—and comfy, too. **space 321**

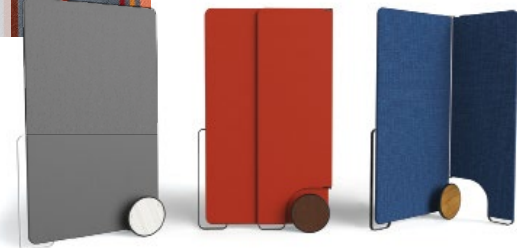


of a different stripe

Among the snappy dressers trotting through the Mart is **Camira Fabrics's** new **Code**, a worsted wool designed to channel trad Savile Row suiting—with a modern twist. The large-scale horizontal pattern bears the stripey, tech-chic look of a barcode. The five colorways pair dark-hued backgrounds with bright accents. But, sorry, you can't wear it: Code was conceived for task and lounge seating. **space 1123a**

screen time

The **open office** is here to stay, folks. Luckily, a host of canny launches at NeoCon were designed with partitioning in mind. This burgeoning product category now includes **Wals**, conceived for **PS Furniture** by Pennsylvania-based product firm Union Design. Choose between a single 40-by-70-inch panel or two hinged ones (the second 24 inches wide). A chic hardwood wheel available in five colors abets mobility, while the lightweight composite core can be covered in felt or other upholstery. **space 7-2094**



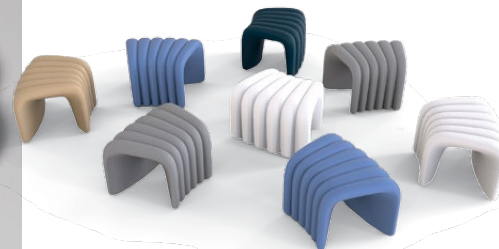
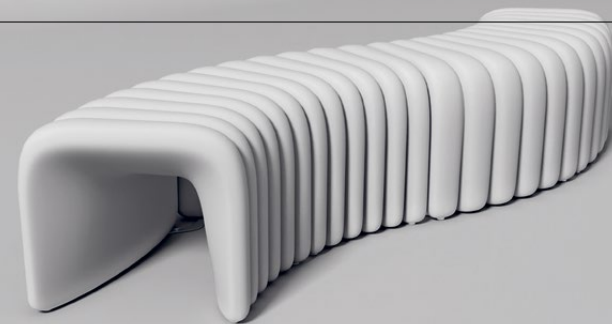
Mohawk Group's nature-inspired **Lichen** flooring—the first to achieve **Living Product Challenge Papat certification**—is the very embodiment of biophilic design. Get the skinny on its sustainable story in **space 377**.



gather 'round

We all know that informal breakout zones are highly conducive to interaction and collaboration, seducing small teams to gather on the fly and ideate. Catering to these casual confabs is **Tapa**, designed by the prolific **Mac Stopa** for **Sixinch**. The modular mobile poufs—there's a four-tiered version plus a circular single unit—can be arranged to create roving islands of reconfigurable seating. Get in line to take Tapa for a test drive on the seventh floor, aisle 6000. **space 7-4086**

10TH FLOOR



INTERIOR DESIGN SHOW DAILY 2017



MAC STOPA



sandler seating

SPACE 1099

Ribbed modules of polyurethane, fortified by steel, gang together to form an appropriately large seating element in **River Snake**. Conceived by Massive Design's **Mac Stopa**, the lightweight modular stools—which are both weatherproof and flame retardant—can be configured into myriad installation patterns, suiting public spaces both indoors and out. Available in eight standard colors and a metallic silver, River Snake can also be specified in custom hues.

MONDAY