

Think Bold.
Think Massive

MASSIVE DESIGN



Massive Design is an award-winning full-service corporate interior planning and design firm. In addition to having over **5.3 million** sq. m. of space planning projects for more than **2.000** organizations and companies with over **1.25 million** sq. m. of interior design projects under our belt, Massive Design has an unparalleled track record of successfully completed high profile interior fit-out projects.

Founded by Mac Stopa, expert space planner, chief architect, designer and the creative force behind Massive Design, for over twenty years (since 1996) our firm has been specializing in providing interior planning, design and project supervision services to multinational corporate clients, including many Fortune and Global 500 companies from a variety of industry sectors. Massive Design is known for modern, innovative and unconventional interiors that reflect and enhance company's corporate image and for designing interiors that are functional, comfortable and productive work environments, increasing company's appeal as "an employer of choice."

The company currently employs over 25 experienced designers and dedicated 3D visualization team.

Massive Design Sp. z o.o.

Ul. Wronia 31, 00-846 Warszawa,
Poland
Tel.: +48 22 627 30 82
Fax: +48 22 621 23 60
office@massivedesign.pl
www.massivedesign.pl



Over 2000 corporate Clients and still counting...



We always design **functionally** and **efficiently**

The basic purpose is to create a perfectly running and organic environment for employees to fulfil their potential. A well-designed office supports workflow and brings all necessary tools to help people be more productive and innovative.

Due to our experience and over 5,3 million sqm delivered as space plans and test fits, we are considered to be one of the best architectural studios with great knowledge and experience-based achievements and our history.

As we have delivered over 1,25 million sqm projects for over 150.000 people, we know how to design efficiently and functionally.



We always Think about **sustainability**



ESG



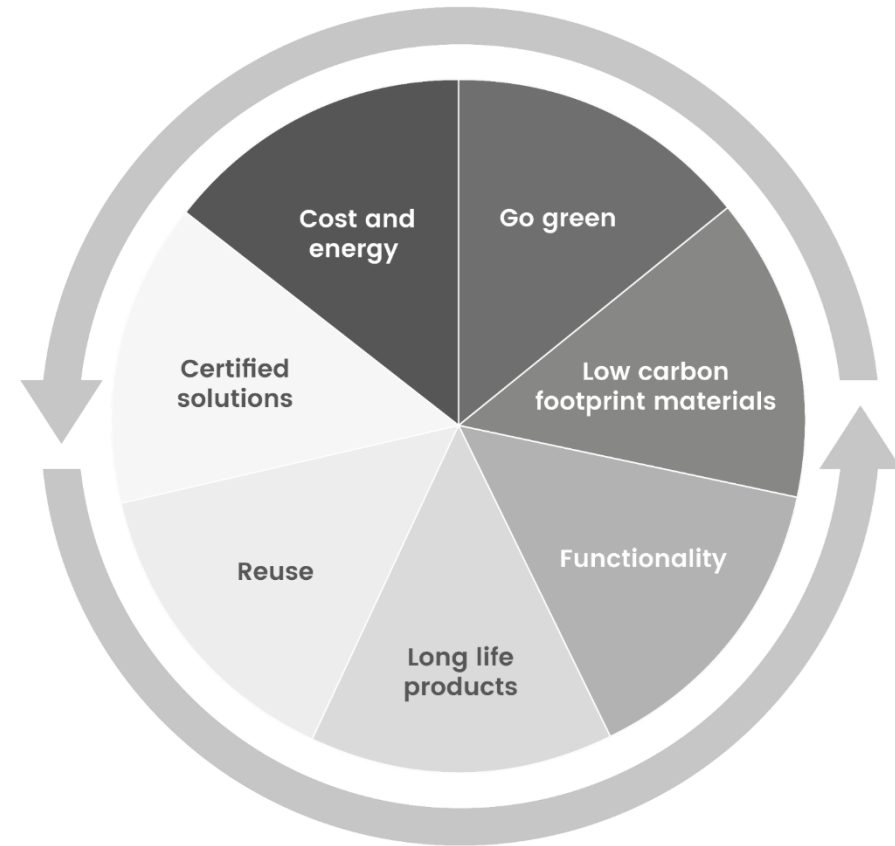
ENVIRONMENT



SOCIAL



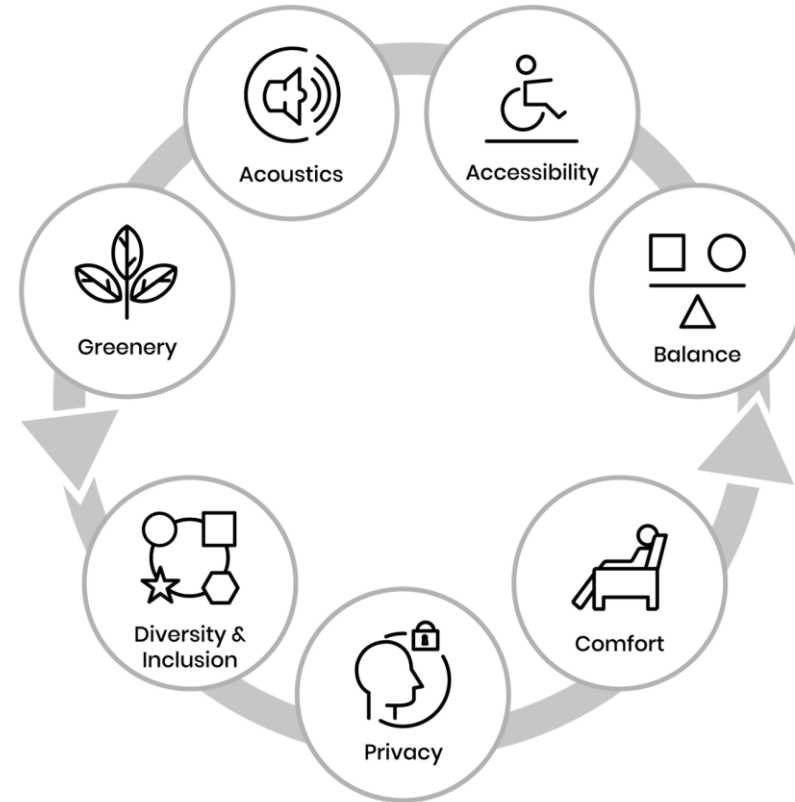
GOVERNANCE



We should all be aware of our global resources and how important the circular economy is. By preparing our designs we are focused on both less waste and cost efficient solutions. We prefer to use long life products that will serve and improve the aesthetics for a long time. Many of our clients decide to renew their lease agreements in currently occupied buildings as the interiors we design are still fully functional and modern even after 7 years. We are always focused on modern technology that helps to lower our carbon footprint and bring down the cost, energy & water saving.



We always design for wellbeing



In all of our projects we are focused on preparing the best possible office standard. Our goal is to share the knowledge on how to create an office space that can be a best place to work.

A place that will bring you balance, privacy and comfort through the use of diverse & inclusive solutions. Our focus on acoustics and functionality helps create a great workplace that can be appreciated by all employees.



Our services



We provide professional services for all – the tenants, the agencies and developers or the building owners. Our projects can be found not only in Poland but also in prime locations around the Europe. We are also responsible for delivering multiple successful projects for the furniture industry with the products used worldwide.

WORKPLACE ADVISORY

SPACE PLANS

CONCEPT DESIGN

EXECUTION DESIGN

MEP DESIGN

AUTHOR'S SUPERVISION

ADDITIONAL DESIGN SERVICES

BUILDING ANALYSIS

PROFFESIONAL ADVISORY

PRODUCT DESIGN



WARSZAWA

SAP

1 500 m²

“Our priority was to adapt the office space to both the company's culture and the current needs of employees. In recent years, the model of using office space has changed, so we really wanted the new SAP office to be a space to which employees would want to come back.”

– *Monika Rudecka, Facility Manager at SAP Polska*



WARSZAWA

SAP



WARSZAWA

EU Agency

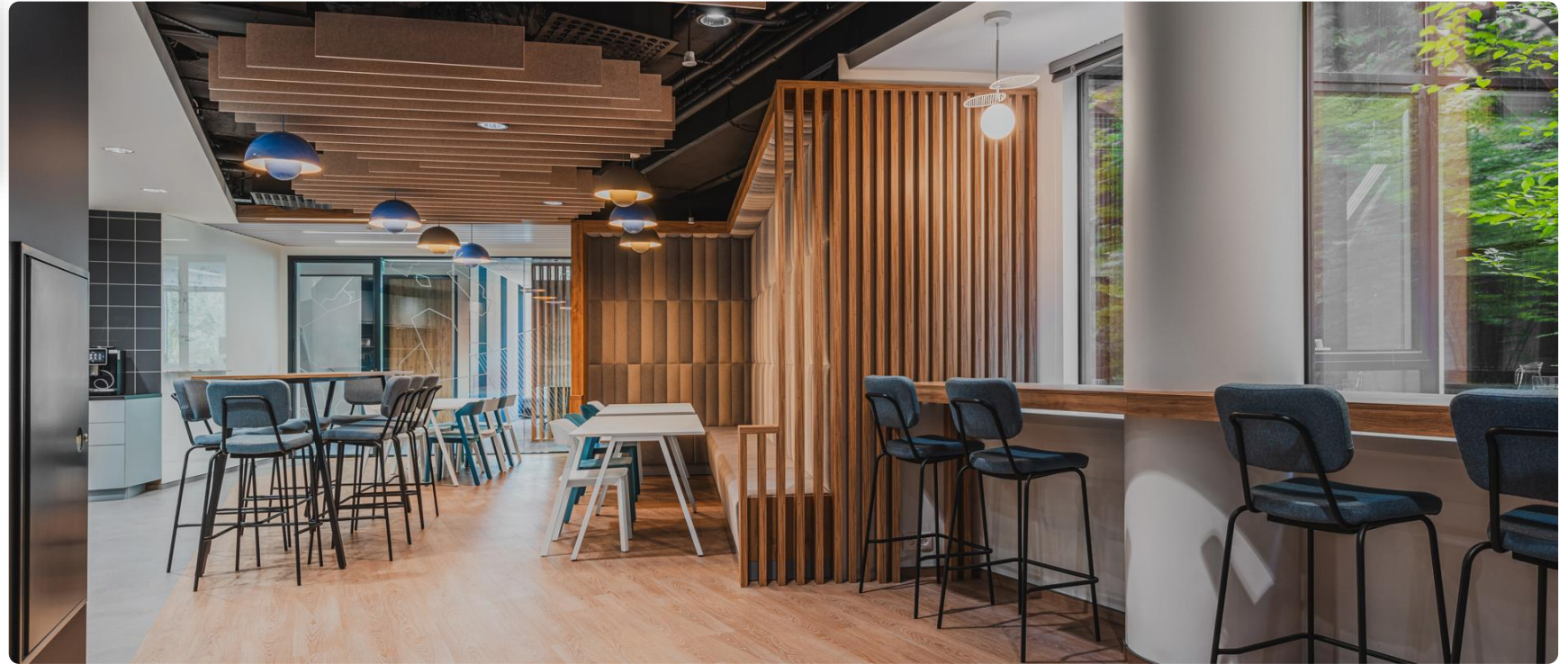
6 000 m²

The fifth stage of designing of the Agency was an opportunity to develop the hybrid office concept. The work environment created inside the three floor space was an adaptation of existing offices. It is designed to meet highest ergonomics and functionality standards. What is most important it is also designed to be universal for employees from all European Union nations.



WARSZAWA

EU Agency



WARSZAWA

AstraZeneca

6 000 m²

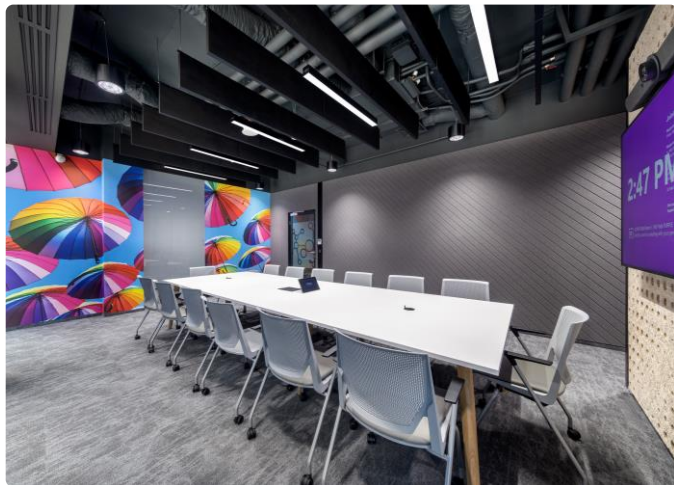
„Massive Design have been working with us for years and know our global standards. The new area had its special requirements as it was important to be consistent with the principles of sustainable development. The final effect surprised everyone. This is a unique space on the scale of the Warsaw Site. It is characterized by an industrial style of modern design. Everyone will find the right place for themselves there.”

- Magdalena Laskowska, Project Manager & Leader,
AstraZeneca Pharma Poland



WARSZAWA

AstraZeneca



WARSZAWA

Snowflake

6 000 m²

This is the first office of this IT company located in this part of Europe. It is focused on delivering the hybrid solutions and a Workplace for all generations of the employees, but with great attention to the youngest ones. Interior design on the one hand reflected the passion for winter sports connected with the brand, and on the other references to the co-working and university campus style of interiors.



WARSZAWA

Snowflake



WARSZAWA

Moderna

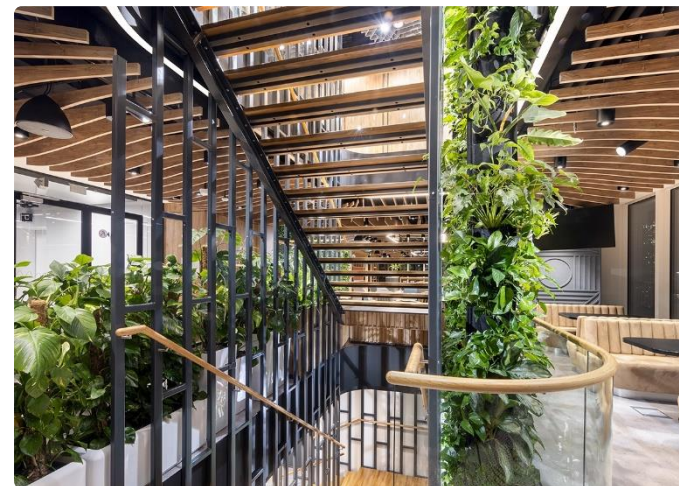
4 700 m²

The new Moderna office is a space created for people and in accordance with their needs. The right way of planning the space, quality and appropriate selection of materials and finishes guarantee maximum comfort of work and the perfect acoustics. This is confirmed by the best recommendation possible - the people who prefer to come to work in the office than stay at home.



WARSZAWA

Moderna



GDAŃSK

Panattoni

300 m²

We are responsible for designing Polish offices for Panattoni, the largest industrial real estate developer in Europe. This is the perfect example how to create the regional branches as a support role for the main office. They are modern, comfortable and are offering similar work comfort to the headquarters located in Warsaw.



GDAŃSK

Panattoni



WARSZAWA

PwC

14 500 m²

PwC Warsaw project was developed in 2013 as the first large scale design that incorporated hot desking, community tables and supporting movable phone booths and meeting pods. The office was evolving since day one and keeps changing and adjusting to the corporate needs. Previous big refurbishment took place in 2017. Now, in 2023 we have developed new concept of open meeting and coworking areas as well as adopting the Office to support hybrid type of working.



WARSZAWA

PWC



WARSZAWA

Insurance Company

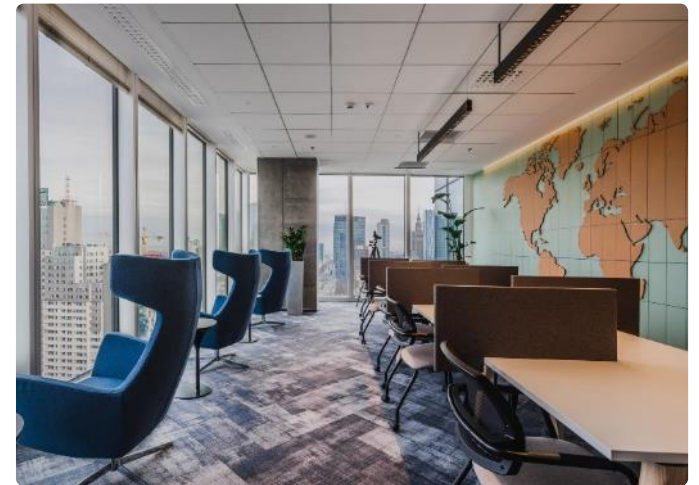
1 300 m²

This Office created for the one of the most famous insurance company is not a typical „nine to five” office. Focused on hybrid ways of working and bringing the best workplace solutions is considered by it’s users as a great place to work and spend some time together.



WARSZAWA

Insurance Company



WARSZAWA

The Heart

700 m²

New opening for The Heart is reflected in changing the focus of the spatial and functional needs. Instead of big event space, now the work and meet spaces as well as the social areas were the key to success. Great multipurpose area connected with the kitchenette bring the new hybrid spirit to The Heart.



WARSZAWA

The Heart



WROCLAW

3M GSC

11 500 m²

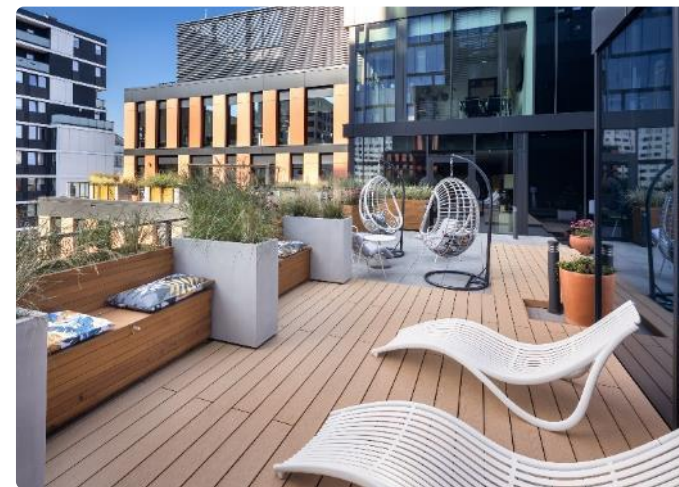
"We were delighted to work with Massive Design again on this key project to deliver a best-in-class service and experience for 3M. This allowed us to combine strong technical project management skills with market-leading creativity and design insight. The end result is impressive, we are proud and honoured to be part of this process"

- Andrew Frizell, Head of Project Development Services, Cushman&Wakefield



WROCLAW

3M GSC



WROCLAW

Vorwerk

1 900 m²

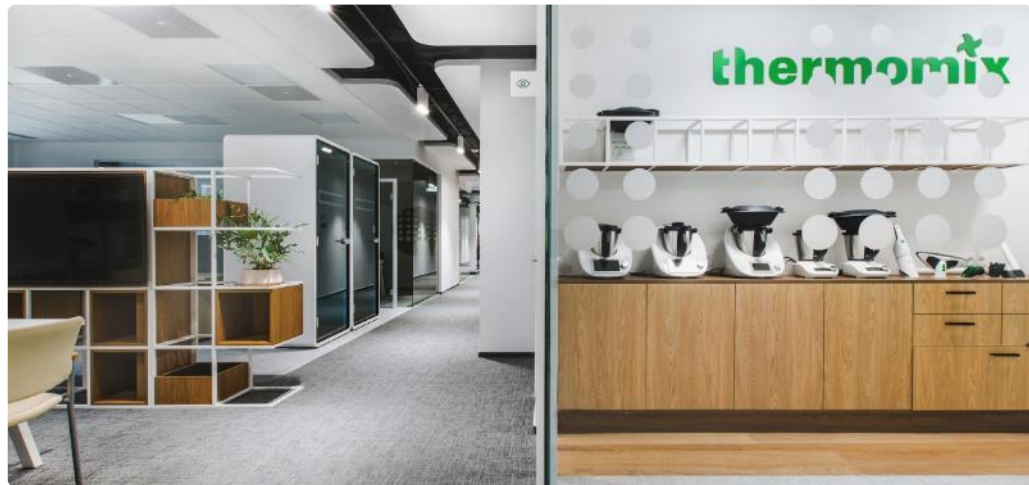
“Massive Design supported us in each stage of project development. After nearly a year of using the space designed by the studio, I can say that the solutions they proposed work perfectly. Employees appreciate the friendly common space, comfortable conference rooms and perfectly designed communication routes. Our office is comfortable and allows for effective work in pleasant conditions.”

– *Wojciech Ćmikiewicz, Chief Executive Officer, Vorwerk Polska*



WROCLAW

Vorwerk



WARSZAWA

Keyloop

1 500 m²

Massive Design did a fantastic job and created a unique space that our employees can be proud of and make the most of their time at work. The main goal for our office transformation was to create a space which people gravitate towards and enjoy.

- *Keyloop project team*



WARSZAWA

Keyloop



WARSZAWA

EU Agency

6 000 m²

Designing of the Agency is a great responsibility and opportunity. The work environment created inside the Agency office should be supporting, not distracting and be almost transparent. It is designed to meet highest ergonomics and functionality standards. What is most important it should be also designed to be universal for employees from all European Union nations.



WARSZAWA

EU Agency



WARSZAWA

Mazars

2 000 m²

"Originality and beauty are a beautiful showcase for Massive Design. Thank you for cooperation in a very nice atmosphere, for unprecedented personal culture, full professionalism as well as reliability and reliability of exceptional rank. I would like to emphasize that both me and the Mazars team will always be Massive Design brand ambassadors."

-Małgorzata Hordyńska,

Director of the Mazars Management Board Office



WARSZAWA

Mazars



WARSZAWA

Unilever

4 000 m²

If we want to encourage people to return to the office, it is not enough to refresh social spaces. Here, a deeper change is needed. In the functioning of the entire office space and redefining the concept of work itself is a must. The reconstruction of the Unilever office showed that the change should be deep and well thought out. Now we have everything that supports the hybrid or patchwork model of work.



WARSZAWA

Unilever



WARSZAWA

BNP Paribas

22 000 m²

“Cooperation with Massive Design was exemplary. More importantly, it was possible to establish a real relationship based on understanding, trust, professionalism and serious treatment of the partner. Massive Design is a team of professionals who can be recommended to design an office tailored to the future.”

- *Elżbieta Witkowska-Hasny, Programme Manager
BNP Paribas Bank Polska*



WARSZAWA

BNP Paribas



WARSZAWA

Cushman & Wakefield

2 000 m²

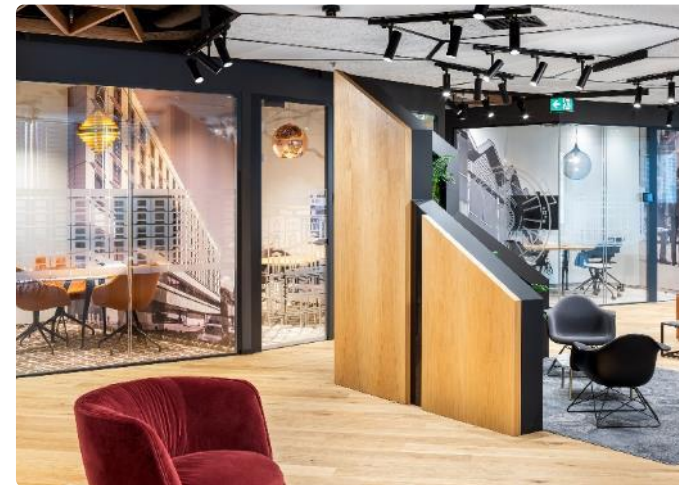
"It was also essential that our employees were provided with a top-quality modern Office that would support building a true community around our key values. Thanks to the commitment of many people and, first of all, thanks to the professionalism of our entire project team, we have successfully created and delivered an office that will meet all our current and future needs and that all of us can be proud of."

- Krzysztof Misiak, Head of Cushman & Wakefield Poland



WARSZAWA

Cushman & Wakefield



WARSZAWA

Oracle

3 500 m²

„The final effect is visible on the photos and speaks for itself. I am very proud of this project, not only for the final result, but also of the entire process. The professionalism and versatility of our partners were invaluable. A great deal of knowledge, creativity, determination and accuracy were the basis of this great project.”

- *Katarzyna Zawadka, Senior Facilities Manager, Oracle*



WARSZAWA

Oracle

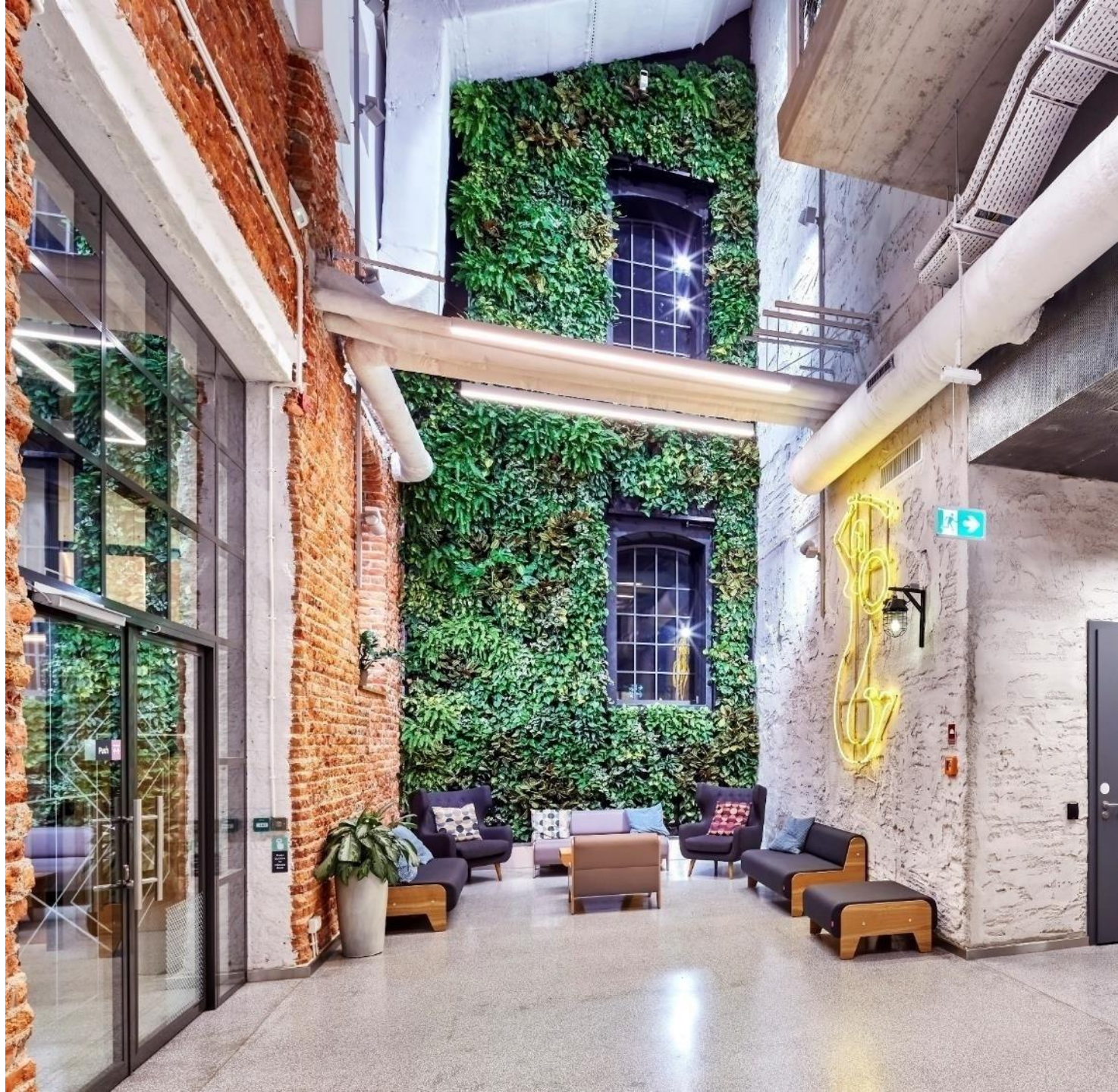


WARSZAWA

Google for Startups

2 000 m²

The greatest challenge of the Campus Warsaw project was determining how best to bring the contemporary campus function to an historic XIX century brick building – a former vodka factory. We added a glazed roof, custom windows, an elevator and staircases. We designed a flexible open space work environment, enriched with both formal and informal spaces.



WARSZAWA

Google for Startups



WARSZAWA

Siemens

7 400 m²

„We are very pleased with the cooperation with Massive Design - their design experience and flexibility. Our new office space created with the studio is very functional and aesthetic. We look forward to work with you in the future!”

- *Robert Figat, Property Management Director, Siemens*



WARSZAWA

Siemens



WARSZAWA

Big Pharma Company

2 000 m²

This project was designed to improve interactions between employees and renew the bonds. Large common areas and great selection of various meeting spaces improved the functionality and the spirit of cooperation. Implemented solutions are showing the trends for the next generation office space. We need to be reunited.



WARSZAWA

Big Pharma Company



WARSZAWA

Łaszczuk i Wspólnicy

700 m²

We asked Massive Design to provide the design of our office for the second time and again we are very satisfied with the final result. Open mind, understanding the client's needs and designers creativity are the features that we particularly appreciate. As we felt we were really in good hands, the next time our first steps will be directed to Massive Design again. „

- Aleksandra Faderewska-Waszkiewicz, attorney-at-law, managing partner of Łaszczuk i Wspólnicy



WARSZAWA

Łaszczyk i Wspólnicy



WARSZAWA

AstraZeneca

16 600 m²

„We wish to express our gratitude for the help and commitment showed by Massive Design in our big project of relocation the whole AZPP company.

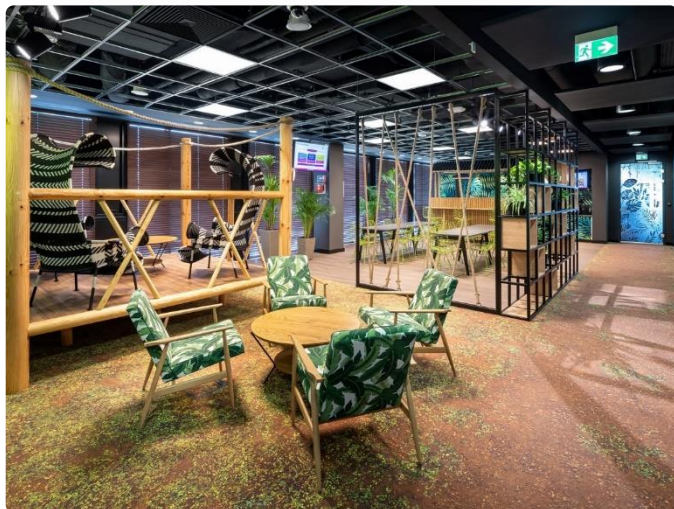
With great pleasure, we would like to admit that at all phases of our cooperation with Massive Design went very smoothly. As a result, we managed to create a modern and employee-friendly office, meeting standards of 21st century workplace.”

- Andrzej Pelczarski, Associate Director Facilities,
AstraZeneca Pharma Poland



WARSZAWA

AstraZeneca



TORUŃ

Neuca

20 000 m²

„We are pleased to recommend the services of the Massive Design company which was responsible for the interior design of our new headquarters in Toruń, Poland. The experience of the team dedicated to our project made a great impression on us. Thanks to the Massive Design we now work in an extremely aesthetic and functional space. This is a result of commendable attention and understanding of our needs. Well done!”

- *Jacek Lisewski, Project Manager , Neuca S.A.*



TORUŃ

Neuca



WARSZAWA

Mars

2 500 m²

Previously created Mars Office was one of the most innovative spaces in 2008. After 10 years the client wanted to retain all the good values and improve the office in accordance to the modern needs and trends including agile and activity based working solutions. Moreover this office was designed to meet LEED Gold standards.



WARSZAWA

Mars



WARSZAWA

Cargill

2 500 m²

„Our goal was to create a warm and friendly space that is offering various areas for work, rest, and the integration of the entire 150-person team. We are very pleased with the final result. We owe it to good cooperation with architects from Massive Design who know and understand the culture of our company as well as our needs and expectations.”

- Iwona Wdowczyk, Office Manager, Cargill



WARSZAWA

Cargill



WARSZAWA

Mondelez

1 500 m²

Refreshing the existing office is a perfect opportunity to rethink its functional layout and aesthetics. The new approach of bringing more of the natural materials and friendly environment for employees was a success.



WARSZAWA

Mondelez



WARSZAWA

Pernod Ricard

2 500 m²

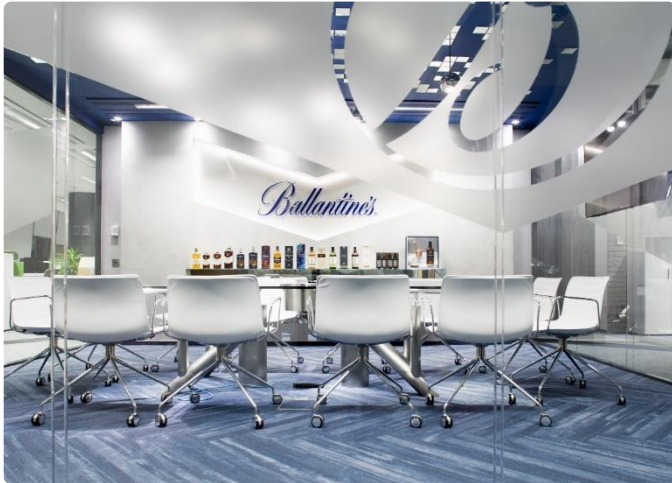
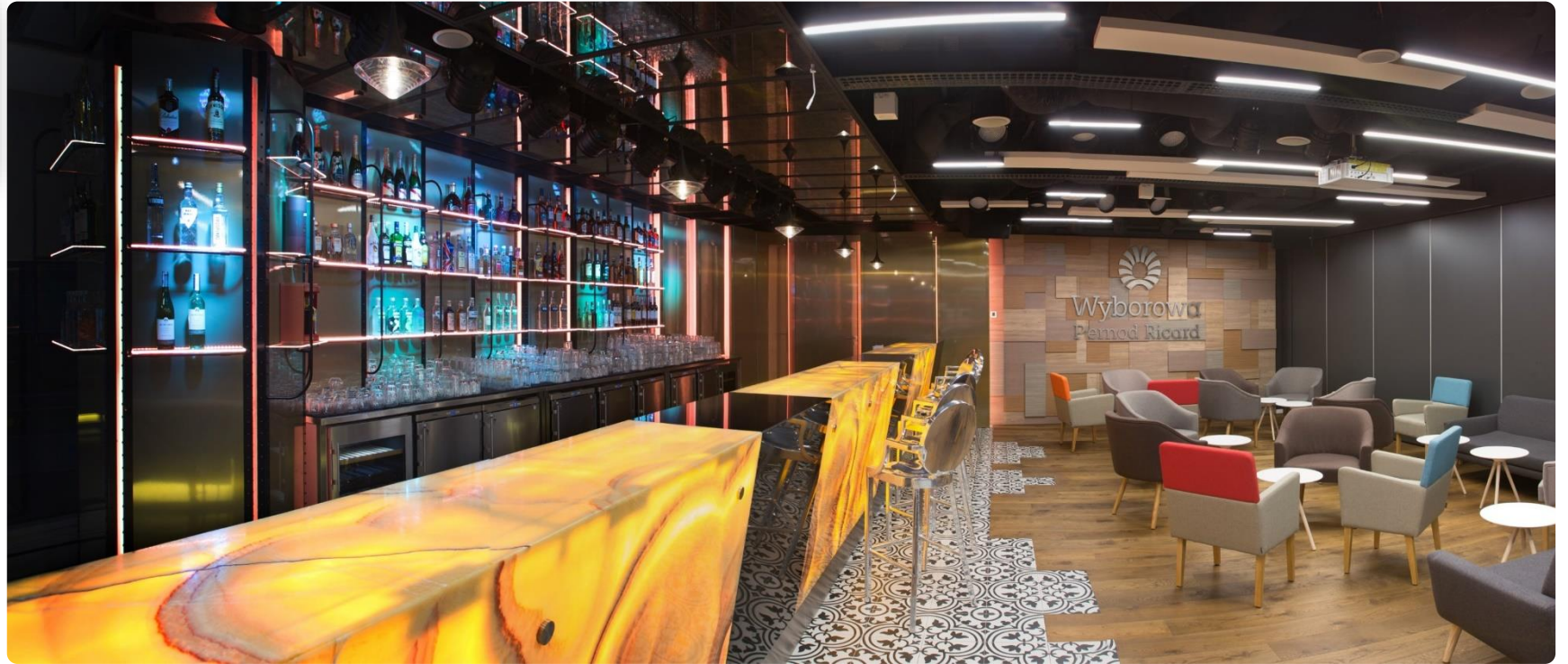
„Very strong recommendation for Massive Design. Highly creative team providing exceptional solutions, able to listen to customer needs and turn them into unique design reflecting the company culture and brand values. We selected Massive Design already twice, to provide the space planning and interior design of our Office. Full satisfaction!”

- Andrzej Szumowski – Vice President, Wyborowa S.A.



WARSZAWA

Pernod Ricard



WARSZAWA

Mastercard

1 400 m²

Fantastic project, with key requirements, apart from professional, highest world standard reception area, was to create exceptional clients' meeting spots. We are glad that the concept of showing the classics of world cinematography, marked discreetly by MasterCard branding, has been selected as the theme.



WARSZAWA

Mastercard



WARSZAWA

Google

11 500 m²

„I would like to thank you and your team for completing an excellent project at our offices in Warsaw and efforts on the Wrocław project over the last couple of years. You and your team have always been quick to react with innovative ideas and solutions to our many and varied requirements. Many thanks.”

– Joe Borrett, Head of Real Estate & Construction –
EMEA, Google



WARSZAWA

Google



Think Bold.

Think Massive

Massive Design Sp. z o.o.

Ul. Wronia 31, 00-846 Warszawa, Poland

Tel.: +48 22 627 30 82

Fax: +48 22 621 23 60

office@massivedesign.pl

